

Course of illness of patients with or without diabetes in peritoneal dialysis program

Brigitta Udvardi Bukits¹ | Iren Szakacs¹ | Laszlo Kovacs^{1,2} | Imre Kulcsar^{1,2}

¹ B. Braun Avitum Hungary, Dialysis Center 6, Szombathely

² Markusovszky Teaching Hospital, Szombathely, Hungary

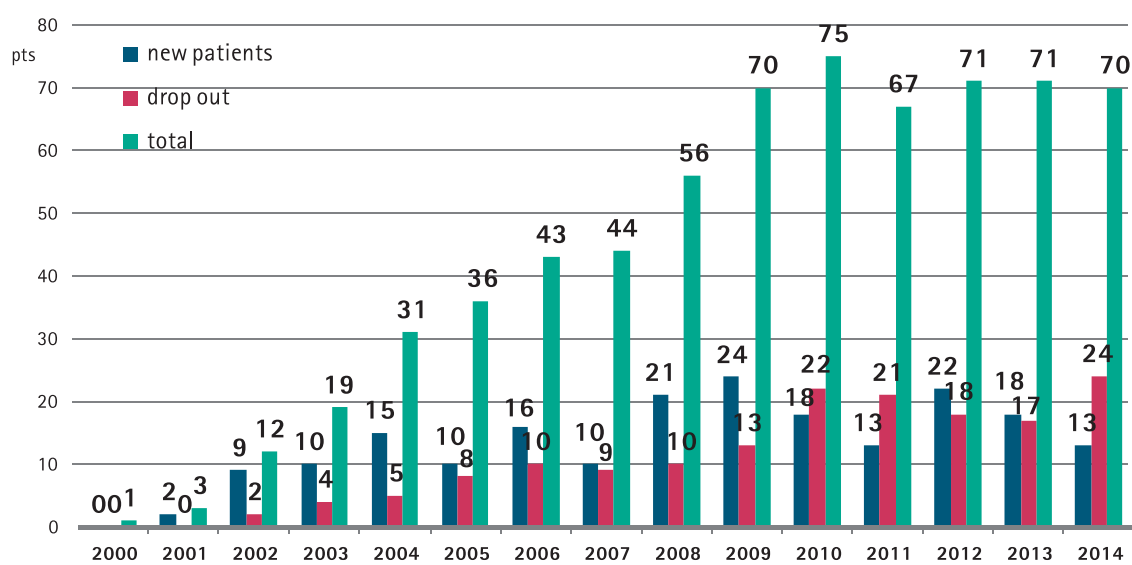
Introduction

Continuous ambulatory peritoneal dialysis (CAPD) makes it easy while the absorbed glucose makes it difficult to treat patients with diabetes.

Aim

To evaluate the course of illness of diabetic or non-diabetic patients treated with peritoneal dialysis (PD).

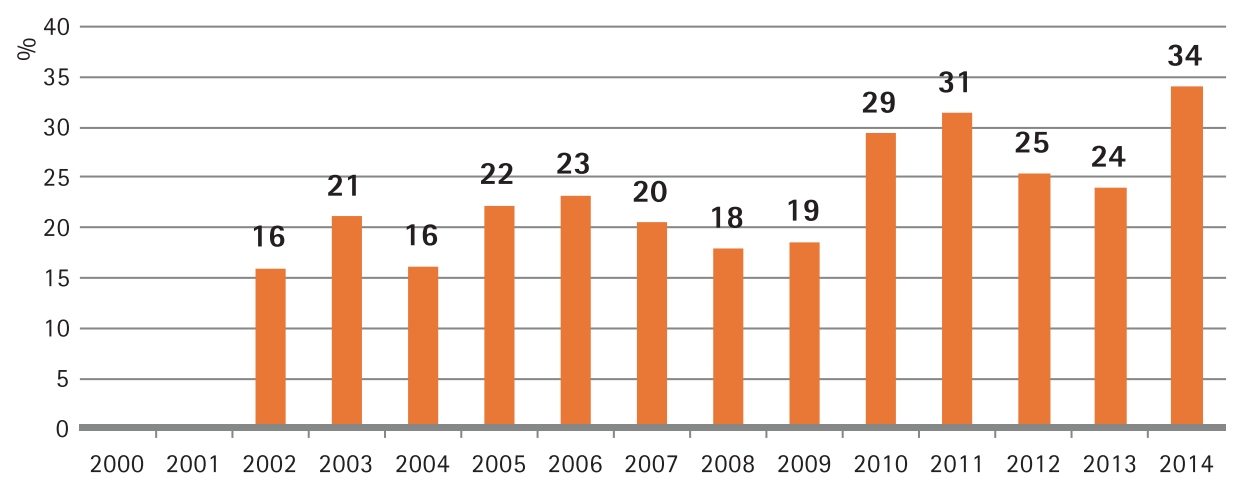
Patients on PD 2000-2014 Szombathely



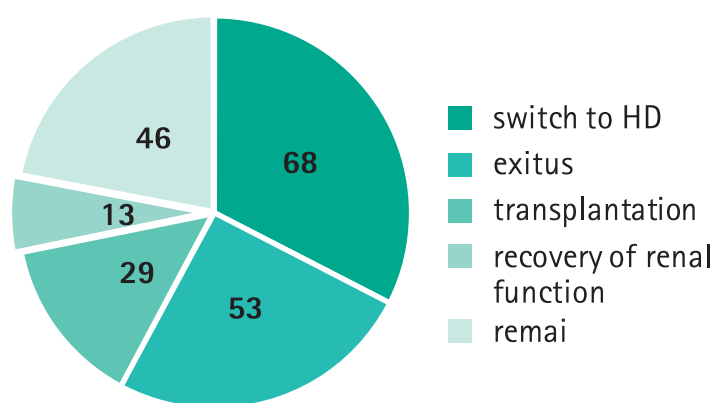
Patients, method

From 2000 to 2014 80 patients (38%) had diabetes out of the 209 patients treated with PD. In both groups drop out rate [due to improvement in kidney function, transplantation (Tx), switching to haemodialysis (HD) and exitus] was examined. PD techniques and patients' survival rate were also observed.

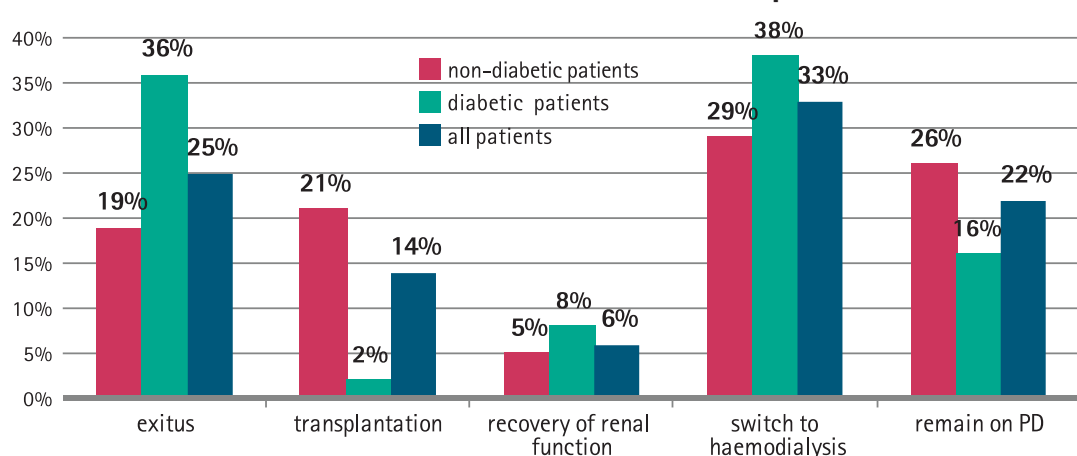
Drop-out rate from our peritoneal dialysis programme (%)



Outcome of patients



Outcome of diabetic (n=80) and non-diabetic patients (n=129)



Survival of PD technics and patients with or without diabetes mellitus in observed period (days)

	PD technic survival (days)	patients survival (days)	total survival (days)
all patients 209 pts	839±680 (6-3455)	659±859 (1-4277)	1499±1124
diabetic patients 80 pts	830±655 (6-2750)	490±636 (0-2350)	1320±956
non-diabetic patients 129 pts	846±696 (10-3455)	764±958 (0-4277)	1610±1204

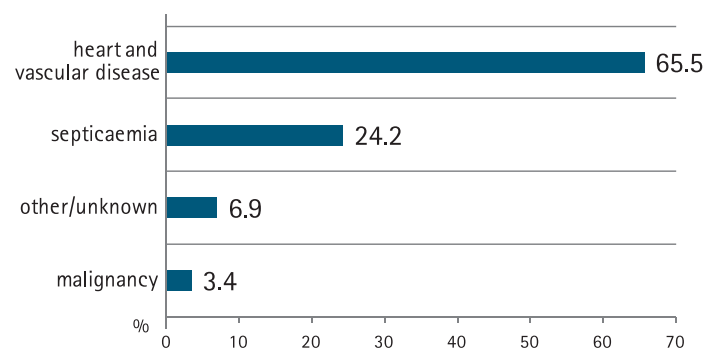
Summary

For a diabetic patient PD is as suitable a renal replacement therapy as for a non-diabetic patients. We observed significant differences in the following:

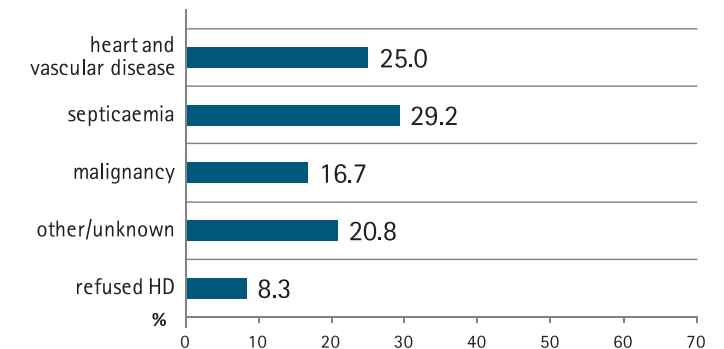
1. The **ratio** of transplanted patients was much lower in the diabetic group (2% vs. 21%).
2. The **mortality** rate was almost double in the diabetic group (36% vs 19%).

Results

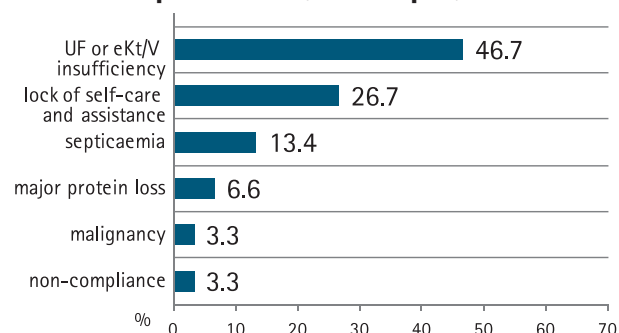
Major causes of death in diabetic patients (n=29 pts)



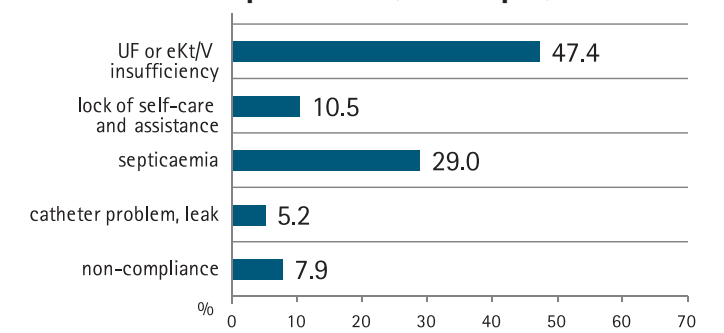
Major causes of death in non-diabetic patients (n=24 pts)



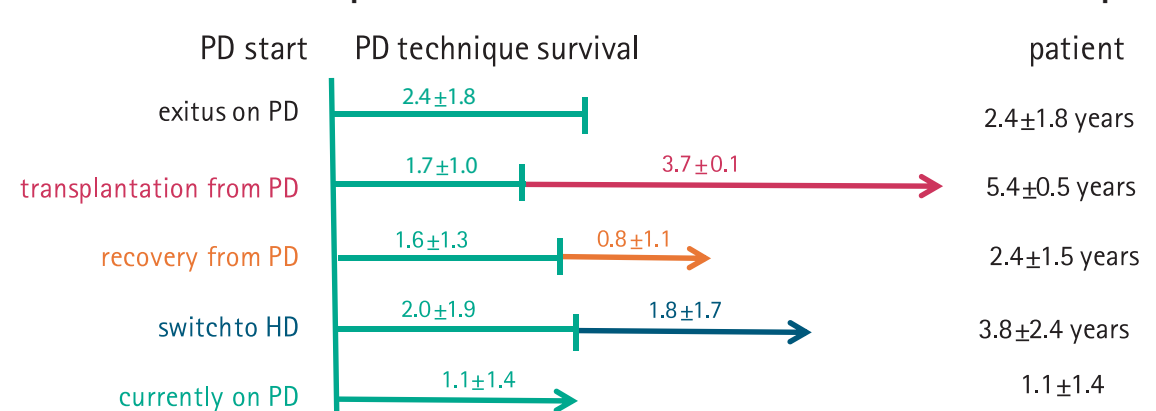
Reasons of starting hemodialysis in diabetic patients (n=30 pts)



Reasons of starting hemodialysis in non-diabetic patients (n=38 pts)



Survival of diabetic patients on PD and after PD in the observed period



Survival of non-diabetic patients on PD and after PD in the observed period (years)

