

# FOLLOW-UP OF THE FATE OF OUR PRE-DIALYSIS PATIENTS BETWEEN 2009 AND 2015

Krisztina Varsanyi<sup>1</sup>, Dalma Kulcsar<sup>1</sup>, Iren Szakacs<sup>1</sup>, Imre Kulcsar<sup>1,2</sup>

<sup>1</sup> B. Braun Avitum Hungary cPlc. Dialysis Centre No. 6, Szombathely, <sup>2</sup> Markusovszky Teaching Hospital, Szombathely

## INTRODUCTION

The number of patients with advanced chronic kidney disease increases from year to year.

## PATIENTS, METHOD

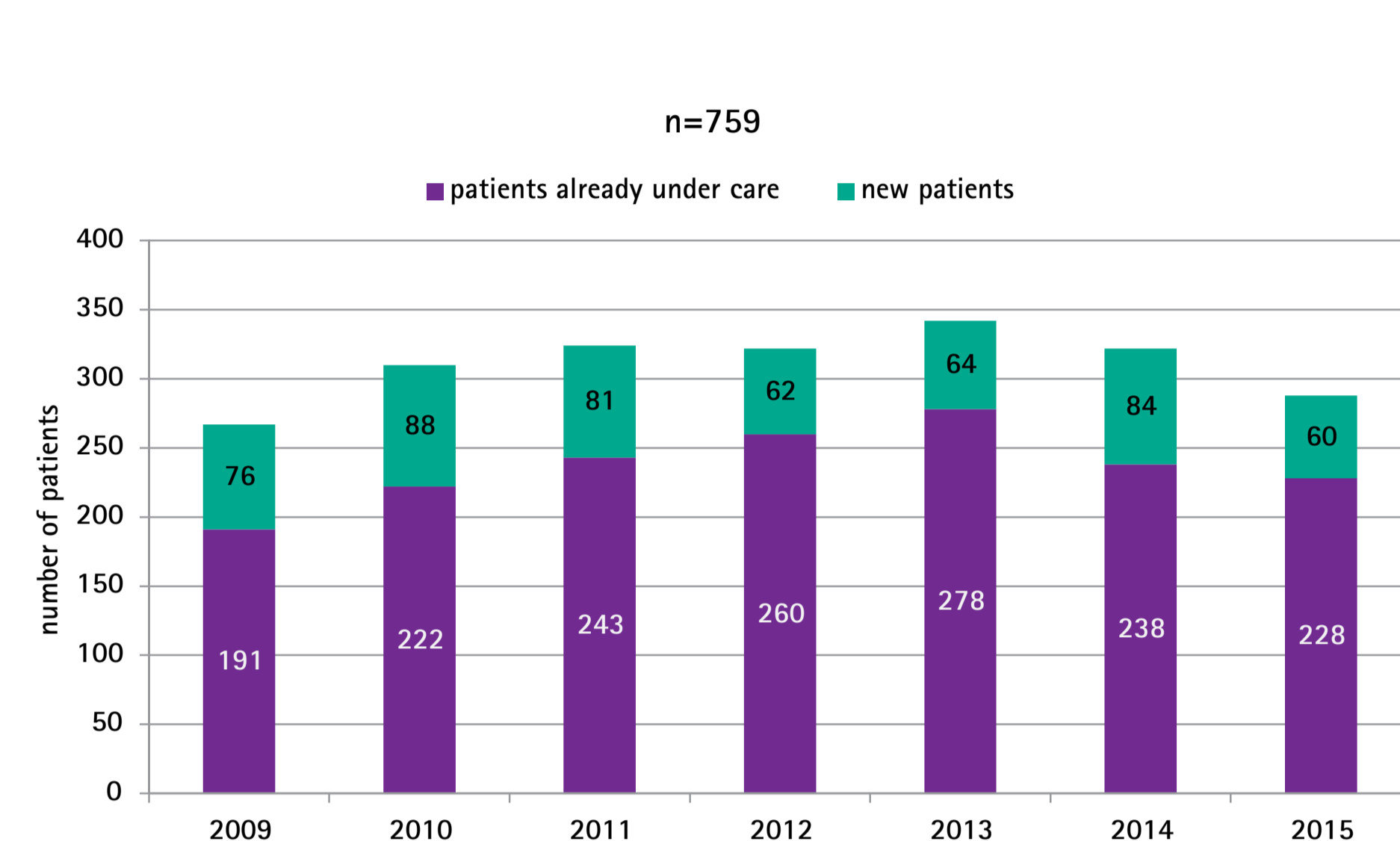
In the period of study, our outpatient clinic for nephrology was visited by a total of 759 patients with GFR values below 20 ml/min/1.73m<sup>2</sup>, i.e. suffering from chronic kidney disease (CKD) stage 4 or 5. The fate of these patients entering the predialysis stage was monitored from 2009 up to the end of 2015.

## RESULTS

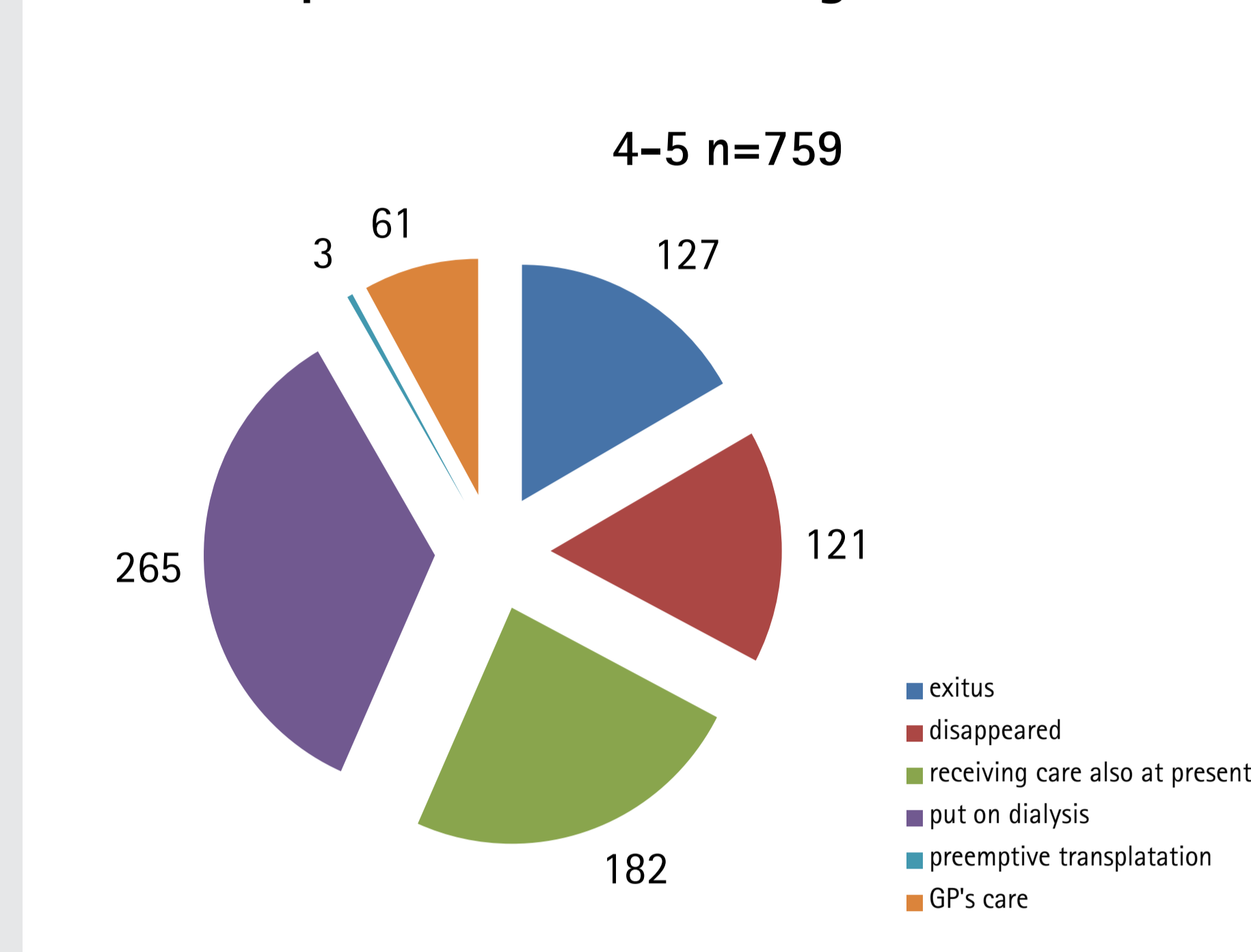
### 6. Our CKD stage 4–5 patients under outpatient nephrological care between 2009–2015

	all patients 759 pts	≤ 65 years 247 pts 32,5%	> 65 years 512 pts 67,5%
average age at the start of care (years)	69.1±13.9	51.7±11.0	76.4±6.6
average age at the time of study or drop-out (years)	72.5±13.5	56.4±11.5	79.5±6.7
average length of care time up to 31 December 2014 or to the drop out date (years)	3.6±2.9	4.7±5.4	3.0±2.9
starting GFR (mL/min/1,73m <sup>2</sup> )	19.5±6.4	16.3±3.8	17.0±3.5
closing GFR (mL/min/1,73m <sup>2</sup> )	19.2±7.8	17.3±12.5	18.6±8.2

### 7. Number of patients receiving care with a GFR <20 mL/min/1.73 m<sup>2</sup> 2009–2015



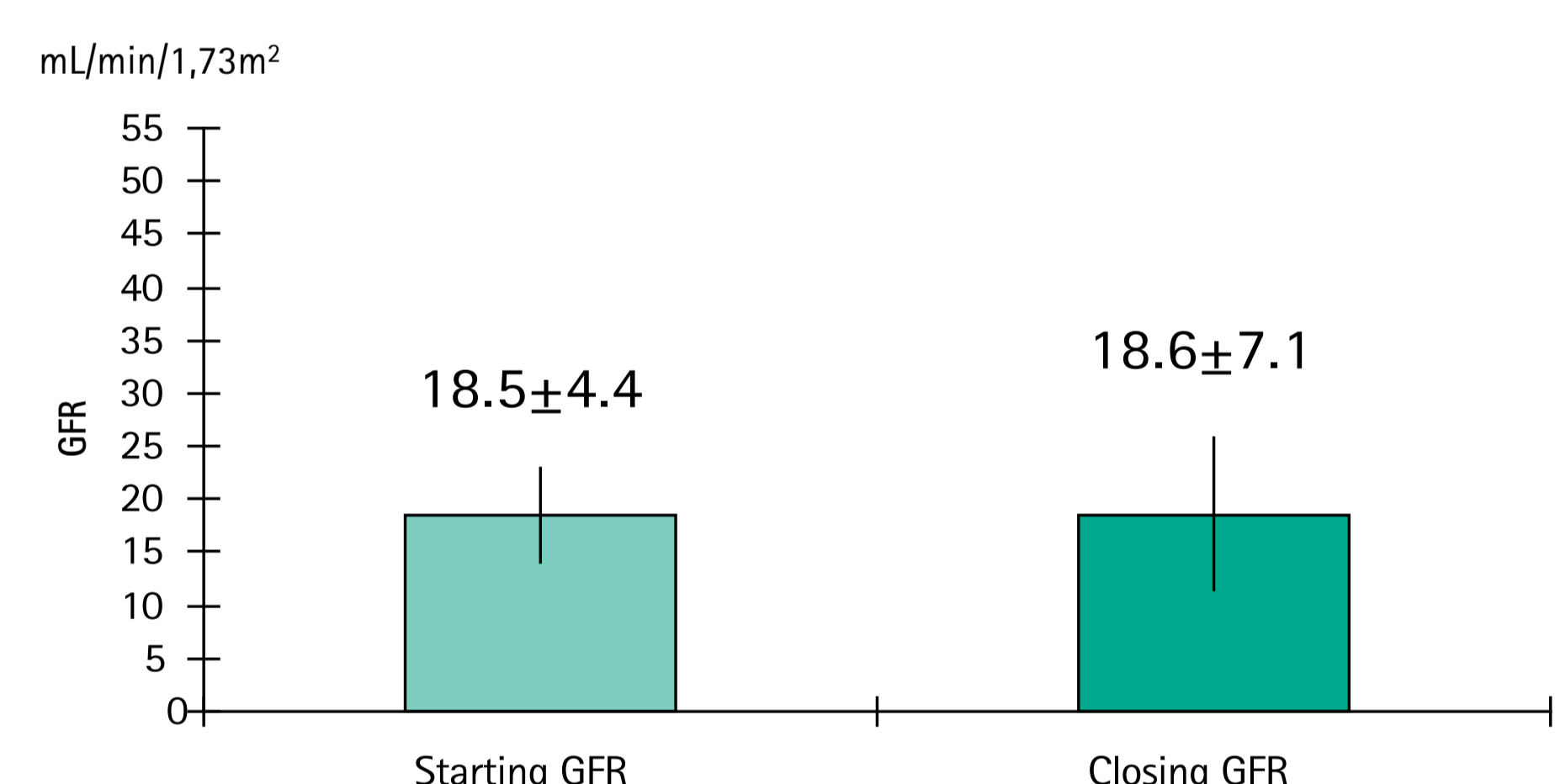
### 8. Fate of patients with CKD stage 4–5 n=759



### 9. Died patients n=127 (16.7%)

	all died patients 127 pts	≤ 65 years 18 pts 14,0%	> 65 years 109 pts 86%
average age at the start of care (years)	74.1±10.3	54.4±12.3	77.3±6.2
average age at drop out (years)	77.3±10.3	56.5±12.8	80.8±5.9
average length of care time (years)	3.3±3.1	2.1±1.8	3.4±3.1
starting GFR (mL/min/1,73m <sup>2</sup> )	18.5±4.4	17.0±4.8	18.7±4.5
closing GFR (mL/min/1,73m <sup>2</sup> )	18.6±7.1	17.0±7.4	18.9±7.2

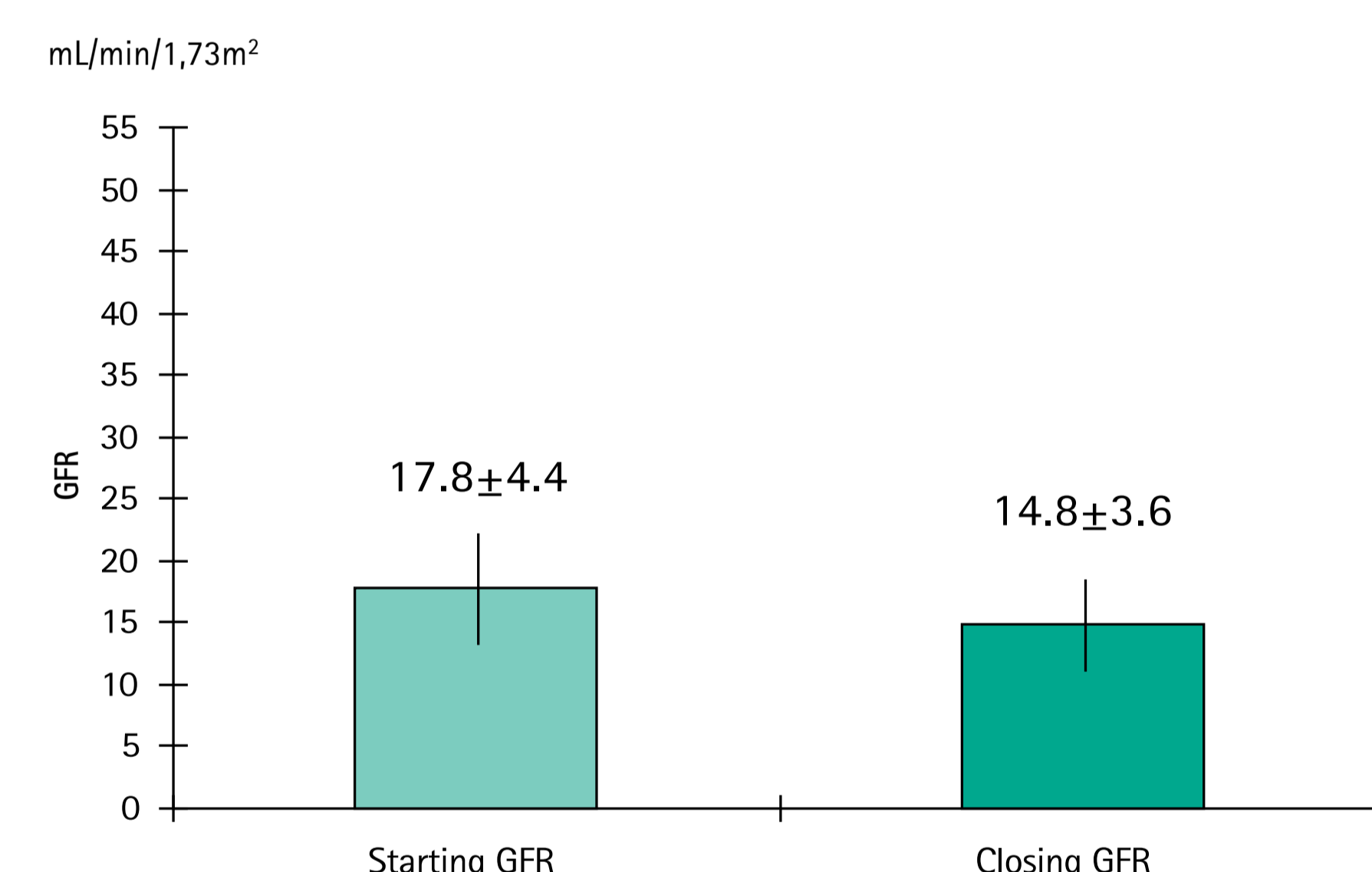
(duration of care: 3.3±3.1)



### 11. "Disappeared" patients n=121 (15.9%)

	all disappeared patients 121 pts	≤ 65 years 26 pts 21,5%	> 65 years 95 pts 78,5%
average age at the start of care (years)	73.9±12.0	54.9±9.2	79.2±6.4
average age at drop out (years)	77.4±11.2	59.9±8.1	82.1±6.3
average length of care time (years)	3.5±4.2	5.0±4.8	2.9±2.3
starting GFR (mL/min/1,73m <sup>2</sup> )	17.8±4.4	16.8±3.1	17.2±3.1
closing GFR (mL/min/1,73m <sup>2</sup> )	14.8±3.6	21.1±16.2	18.9±8.7

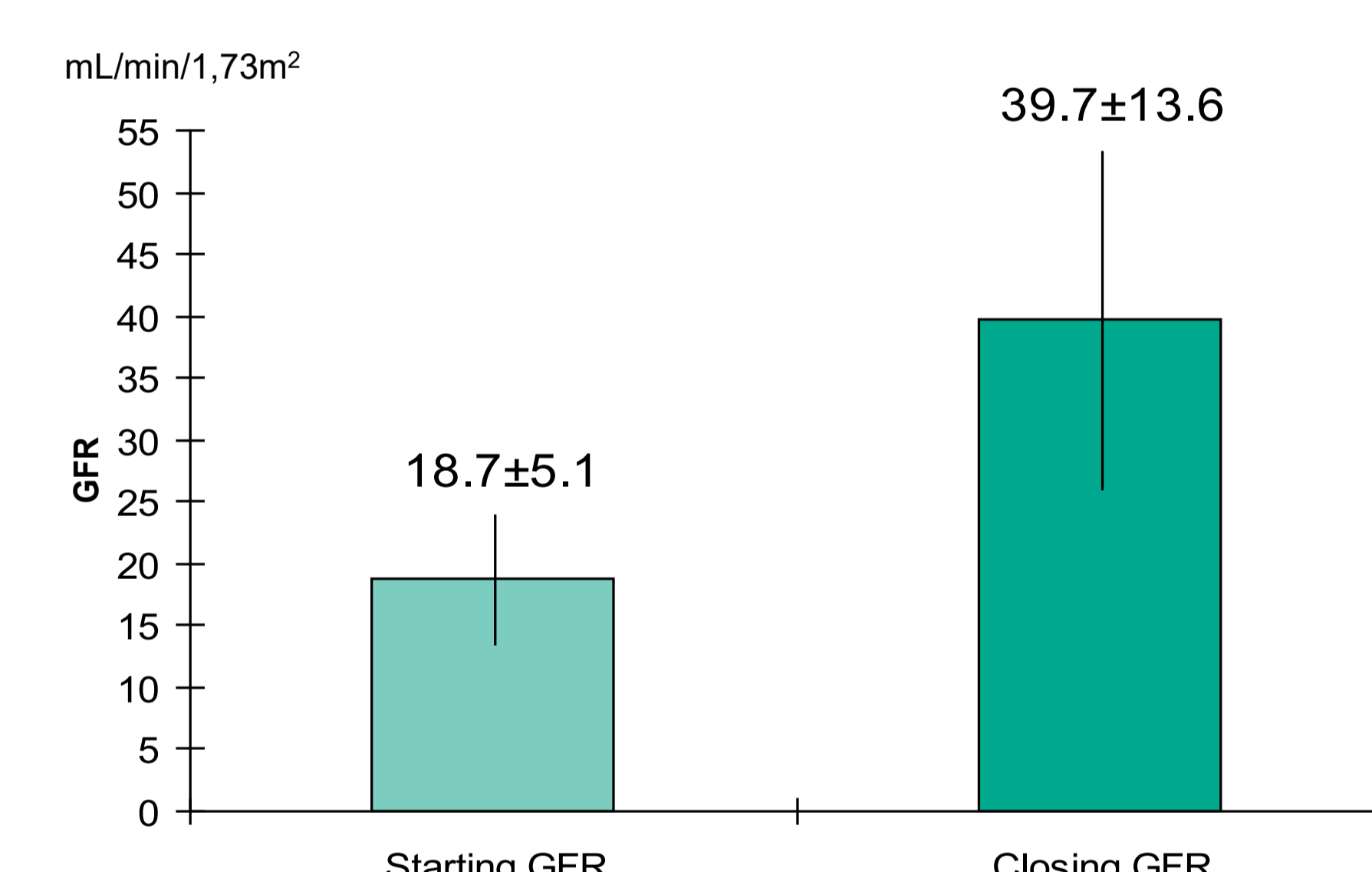
(duration of care: 3.5±4.2 years)



### 13. Back to the GP's care n=61 (8.0%)

average age at the start of care (years)	72.3±10.8
average age at drop out (years)	76.1±10.5
average length of care time (years)	3.8±2.2
starting GFR (mL/min/1,73m <sup>2</sup> )	18.7±5.1
closing GFR (mL/min/1,73m <sup>2</sup> )	39.7±13.6

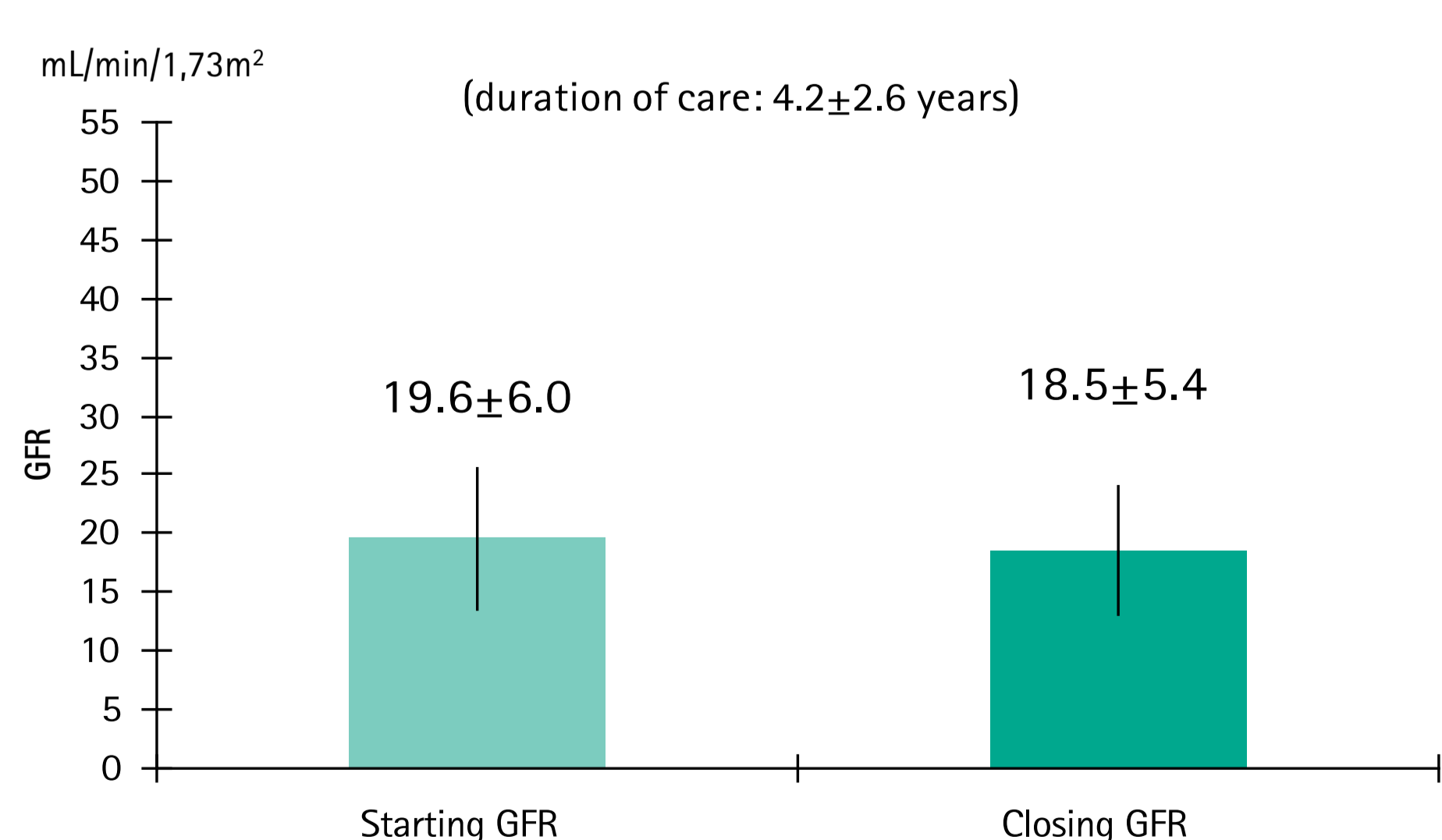
(duration of care: 3.8±2.2 years)



### 15. Patients under nephrological care at the end of study n=182 (23.9%)

	all pts 182 pts	≤ 65 years 44 pts 24,1%	> 65 years 138 pts 75,9%
average age at the start of care (years)	71.6±12.8	54.2±10.4	77.3±6.8
average age at the end of study (years)	75.8±12.6	59.8±11.0	80.9±6.8
average length of care time (years)	4.2±2.6	5.9±5.3	3.6±3.1
starting GFR (mL/min/1,73m <sup>2</sup> )	19.6±6.0	16.7±3.8	19.9±8.8
closing GFR (mL/min/1,73m <sup>2</sup> )	18.5±5.4	20.7±8.8	19.0±5.6

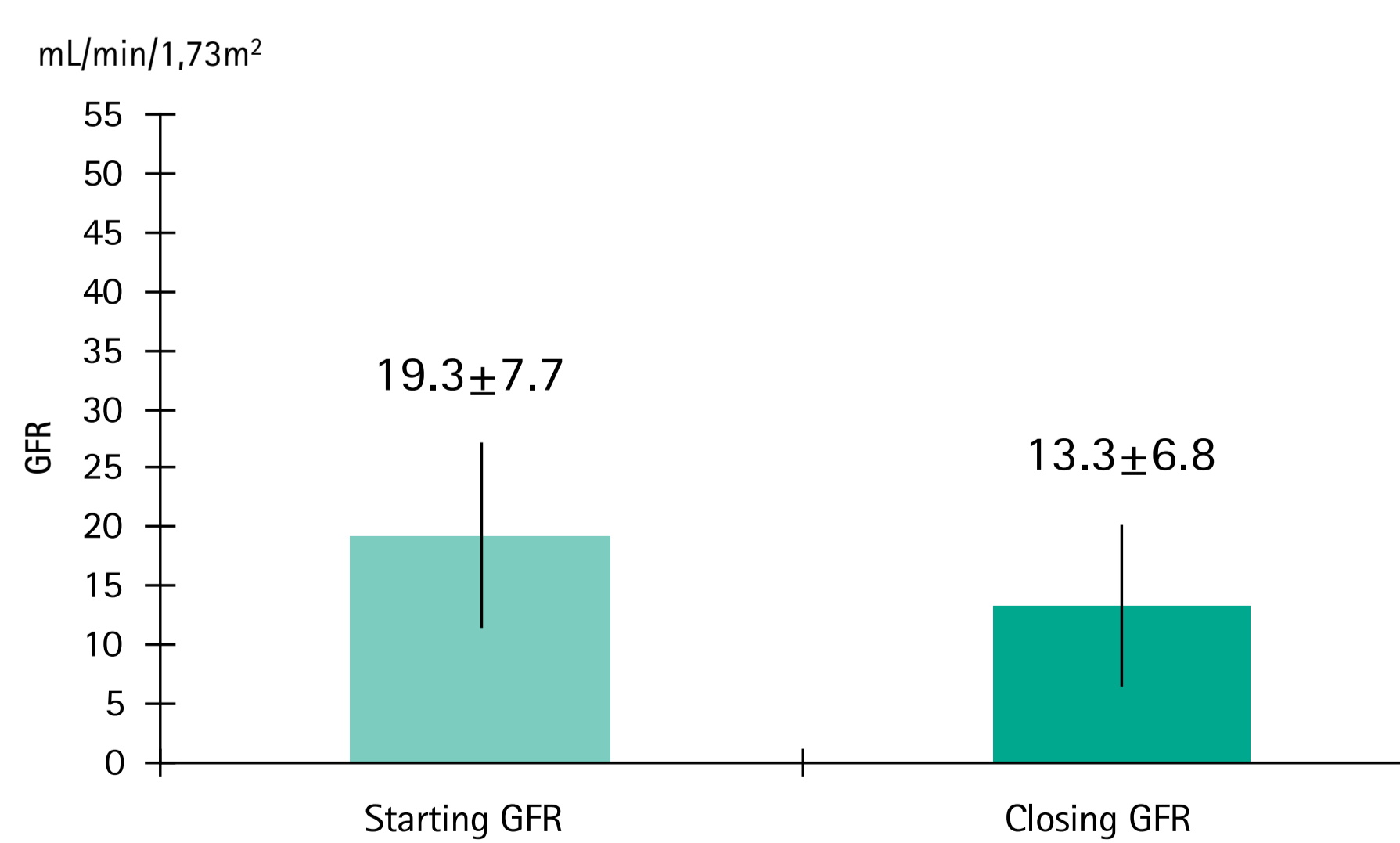
(duration of care: 4.2±2.6 years)



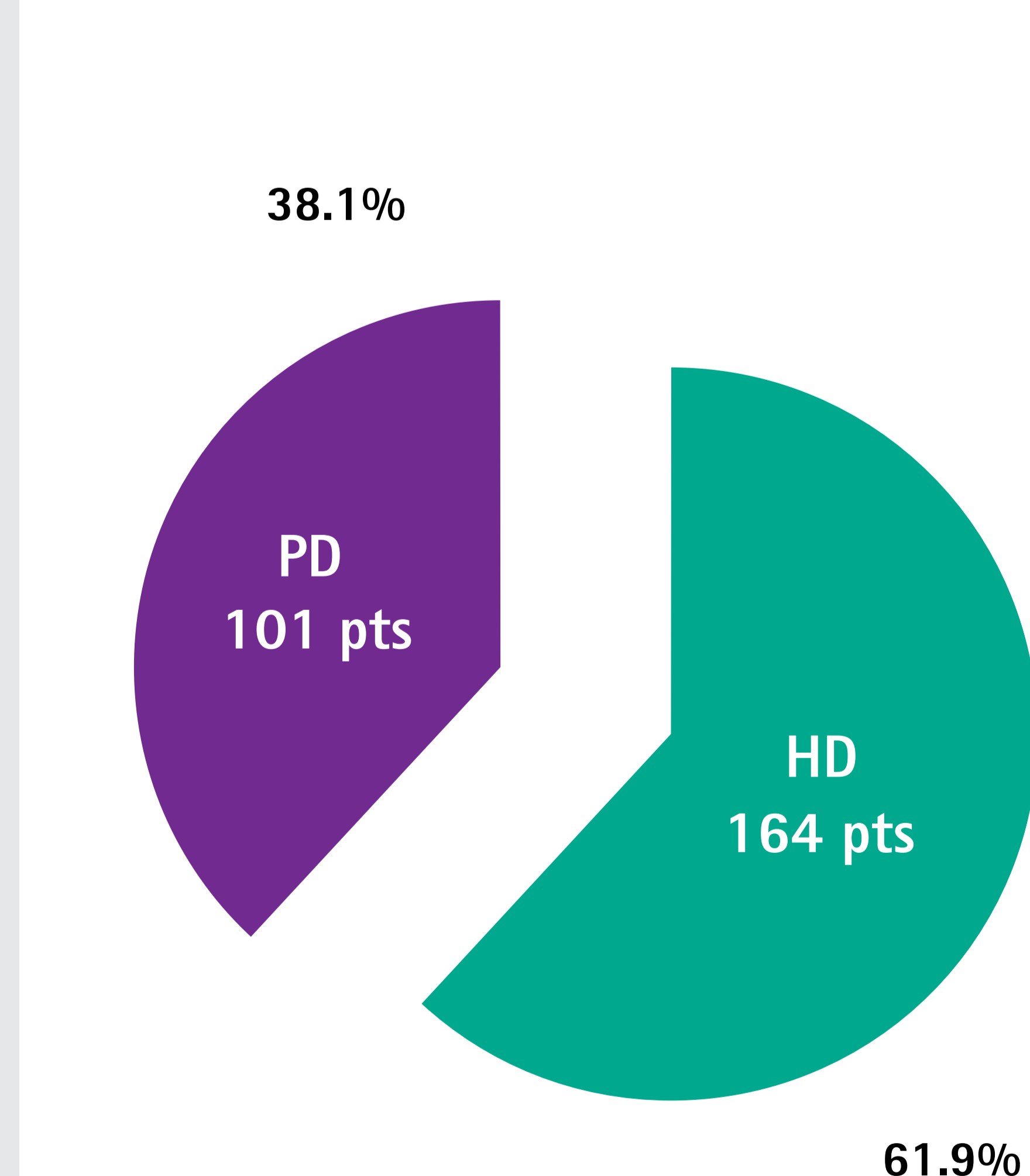
### 17. Patients underwent dialysis therapy n=265 pts (34.9%)

ALL DIALYZED PATIENTS 265 PTS			
	all 208 pts	HD 133 pts 62%	PD 75 pts 38%
average age at the start of care (years)	62.4±14.4	65.6±12.4	57.3±15.8
average age at the start of dialysis (years)	65.4±15.4	68.7±11.7	60.1±18.7
average length of care time (years)	3.4±4.5	3.1±3.8	3.2±5.4
starting GFR (mL/min/1,73m <sup>2</sup> )	19.3±7.7	18.7±6.5	20.1±9.2
closing GFR (mL/min/1,73m <sup>2</sup> )	13.3±6.8	12.3±4.4	14.9±9.2

(duration of care: 3.4±4.5 years)



### 19. Distribution of patients transferred from nephrological care to the dialysis programme n=265 (34.9%)



## CONCLUSION

- About one third of our patients with advanced chronic renal failure are in stable state over seven years.
- The rate of deceased patients was 16.7%. These patients were older and the main cause of death was cardiovascular.
- 15.9% of patients in our care disappeared from the kidney care service.
- 8.0% of the patients were referred to GP's care because their renal function improved (eGFR >30mL/min/1,73m<sup>2</sup>).
- 35.5% of patients initiated renal replacement therapies. **38% of these patients chose PD.**